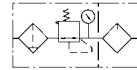


## CAC1010 ~ 5010 系列空气过滤组合 (二联件)

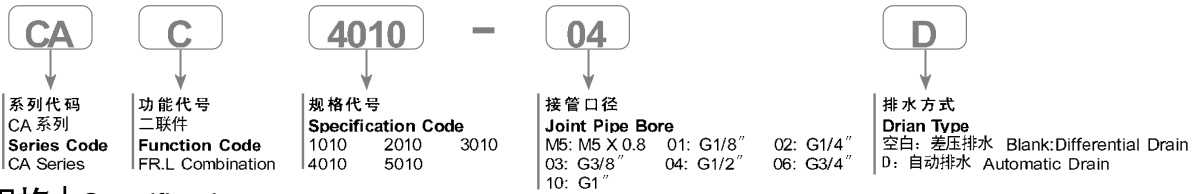
CAC1010~5010 Series Air Filter Combination (FR.L Combination)



图形符号 | Graphic Symbol



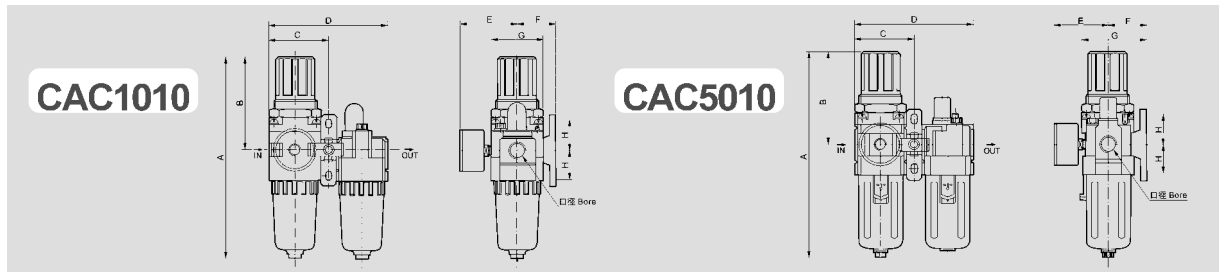
### 订购码 | Ordering Code



### 规格 | Specification

型号 Model	CAC1010-M5	CAC2010-01	CAC2010-02	CAC3010-02	CAC3010-03	CAC4010-03	CAC4010-04	CAC4010-06	CAC5010-06	CAC5010-10	
额定流量 Rated Flow	90	500	500	1700	1700	3000	3000	3000	4000	4000	
接管口径 Joint Pipe Bore	M5	1/8	1/4	1/4	3/8	3/8	1/2	3/4	3/4	1	
过滤精度 Filter Precision	25 μm										
最高使用压力 Highest Working Pressure	1.0MPa										
保证耐压力 Ensured Pressure Resistance	1.5MPa										
使用温度范围 Operating Temperature Range	5~60℃										
调节压力范围 Range of Adjustable Pressure	0.05~0.7MPa		0.05~0.85MPa								
建议用油 Recommended Oil Use	ISO VG 32										
容器材料 Container Material	聚碳酸酯 Polycarbonate										
防护罩 Protective Cover	无 Not Available			有 Available							
放水器功能 Drain Function	差压放水 Differential Drain			差压放水、自动放水 Differential Drain, Automatic Drain							
阀型 Valve Type	带溢流型 With Overflow										
构成元件 Composing Elements	过滤调压阀 Filter & Regulator	CAW1000-M5	CAW2000-01	CAW2000-02	CAW3000-02	CAW3000-03	CAW4000-03	CAW4000-04	CAW4000-06	CAW5000-06	CAW5000-10
	油雾器 Lubricator	CAL1000-M5	CAL2000-01	CAL2000-02	CAL3000-02	CAL3000-03	CAL4000-03	CAL4000-04	CAL4000-06	CAL5000-06	CAL5000-10

### 外形尺寸 | Overall Dimension



### 尺寸表 | Dimension Sheet

型号 Model	口径 Bore	A	B	C	D	E	F	G	H	型号 Model	口径 Bore	A	B	C	D	E	F	G	H
CAC1010	M5	109.5	50.5	29	58	26	25	25	20	CAC4010	3/8~1/2	262	112	77	154	70.5	41	70	40
CAC2010	1/8~1/4	164.5	78	46	90	56.8	30	40	24	CAC4010-06	3/4	267	114	82	164	70.5	50	70	40
CAC3010	1/4~3/8	211	92.5	58.5	117	60.8	41	53	35	CAC5010	3/4~1	338	116	97.5	195	75.5	69.8	90	50