

2V 系列二位二通电磁阀

2V Series Two-position Two-way Solenoid Valve



订购码 | Ordering Code

2V

规格代码
2V: 二位二通电磁阀
Specification Code
2V: Two-position Two-way Solenoid Valve

025

流量孔径
Aperture of Flow Rate
025: 2.5mm
130: 13mm
250: 25mm

-

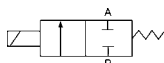
30

接管口径
Joint Pipe Bore
06: 1/8" 08: 1/4"
10: 3/8" 15: 1/2"
20: 3/4" 25: 1"

AC220V

标准电压
Standard Voltage
DC12V
DC24V
AC24V 50Hz/60Hz
AC110V 50Hz/60Hz
AC220V 50Hz/60Hz
AC380V 50Hz/60Hz

图形符号 | Graphic Symbol



规格 | Specification

型号 Model	2V025-06	2V025-08	2V130-10	2V130-15	2V250-20	2V250-25
工作介质 Working Medium	空气、水、油 Air, Water, Oil					
动作方式 Motion Pattern	直动式 Direct Drive Type			先导式 Guide Type		
型式 Type	常闭型 Normal Close Type					
流量孔径 mm Aperture of Flow Rate	2.5		13		25	
CV 值 CV Value	0.23		6.2		23	
接管口径 Joint Pipe Bore	1/8"	1/4"	3/8"	1/4"	3/4"	1"
使用流体粘滞度 Operation Fluid Viscosity	20 CST 以下 (Below)					
使用压力 Working-pressure	空气 Air, 水 Water, 油 Oil: 0~1.0MPa			空气 Air, 水 Water, 油 Oil: 0.05~0.7MPa		
最大耐压力 Max. Pressure Resistance	1.5MPa			1.05MPa		
工作温度范围 Operating Temperature Range	-10~+80°C					
使用电压范围 Voltage Range	±10%					
保护等级 Protect Class	IP65					
耗电量 Power Consumption	AC:7VA/60Hz, 9VA/50Hz; DC:6W					
绝缘性 Insulation	F级 F Class					
本体材质 Material of Body	铝或铜 Aluminum or Brass			黄铜 Brass		
油封材质 Material of Oil Seal	NBR 或 VITON / NBR or VITON			NBR		
最短励磁时间 Shortest Excitation Time	0.05 秒 / Second					

*特殊电压及特殊规格请与厂方接洽 Please contact Factory for special voltage and Specification.

2V 系列二位二通电磁阀

2V Series Two-position Two-way Solenoid Valve

外形尺寸 | Overall Dimension

