

4V300 系列电磁阀、气控阀

4V300 Series Solenoid Valve, Pneumatic Control Valve



订购码 | Ordering Code

4V	3	10	-	10	B	AC220V	-	W
规格代码 4V: 二(三)位五通电磁阀 4A: 二(三)位五通气控阀 3V: 二位三通电磁阀 3A: 二位三通气控阀 Specification Code 4V: Two (Three)-position Five-way Solenoid Valve 4A: Two (Three)-position Five-way Pneumatic Control Valve 3V: Two-position Three-way Solenoid Valve 3A: Two-position Three-way Pneumatic Control Valve	系列代码 300系列 Series Code 300 Series	线圈及位数 10: 单头双位置 20: 双头双位置 30C: 双头三位置封闭型 30E: 双头三位置排气型 30P: 双头三位置压力型 Coil and Places 10: Single-head Double-position 20: Double-head Double-position 30C: Double-head Three-position Close Type 30E: Double-head Three-position Exhaust Type 30P: Double-head Three-position Pressure Type	-	接管口径 Joint Pipe Bore 08: 1/4" 10: 3/8"	接管形式及初始状态 空白: 管接式 B: 二位五通板接式 三位五通板接式 NC: 二位三通常闭型 NO: 二位三通常开型 Joint Pipe Form and Initial State Blank: Pipe Connection Type B: Two-position Five-way Plate Connection Type Three-position Five-way Plate Connection Type NC: Two-position Three-way Normal Close Type NO: Two-position Three-way Normal Open Type	标准电压 Standard Voltage DC12V DC24V AC24V 50Hz/60Hz AC110V 50Hz/60Hz AC220V 50Hz/60Hz AC380V 50Hz/60Hz	-	接线形式 空白: 标准端子式 LD: 棕色带灯端子式 LD ₁ : 白色带灯端子式 W: 引线式 Wiring Form Blank: standard Connector LD: Brown with Lighting Connector LD ₁ : White with Lighting Connector W: Lead Wire Type

规格 | Specification

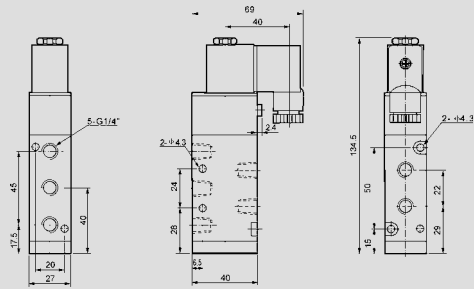
型号 Model	4V310-08 4V320-08	4V330C-08 4V330E-08 4V330P-08	4V310-10 4V320-10	4V330C-10 4V330E-10 4V330P-10
位通数 Position and Way NO.	二位五通 Two-position Five-way	三位五通 Three-position Five-way	二位五通 Two-position Five-way	三位五通 Three-position Five-way
有效截面积 Effective Sectional Area	25mm ² (CV=1.40)	18mm ² (CV=1.00)	30mm ² (CV=1.68)	18mm ² (CV=1.00)
型号 Model	3V310-08 3V320-08	3A310-08 3A320-08	3V310-10 3V320-10	3A310-10 3A320-10
位通数 Position and Way NO.	二位三通 Two-position Three-way		二位三通 Two-position Three-way	
有效截面积 Effective Section Area	25mm ² (CV=1.40)		30mm ² (CV=1.68)	
接管口径 Joint Pipe Bore	进气=出气=排气= G1/4" Air Inlet=Air Outlet=Exhaust=G1/4"		进气=出气= G3/8" 排气= G1/4" Air Inlet=Air Outlet=G3/8" Exhaust=G1/4"	
工作介质 Working Medium	经40微米过滤的空气		40 Micron Filtered Air	
动作方式 Motion Pattern	内部先导式		Inner Guide Type	
使用压力 Working pressure	0.15~0.8MPa			
最大耐压力 Max. Pressure Resistance	1.2MPa			
工作温度 Operating Temperature	5~50℃			
电压范围 Voltage Range	± 10%			
耗电量 Power Consumption	AC: 4.5VA DC: 3W			
绝缘性及防护等级 Insulation & Protection Class	F级. IP65 F Class. IP65			
接线形式 Wiring Form	出线式或端子式 Lead Wire or Connector type			
最高动作频率 Highest Action Frequency	每秒五次 5 Cycle / Sec			
最短励磁时间 Shortest Excitation Time	0.05 秒 0.05 Second			

4V300 系列电磁阀、气控阀

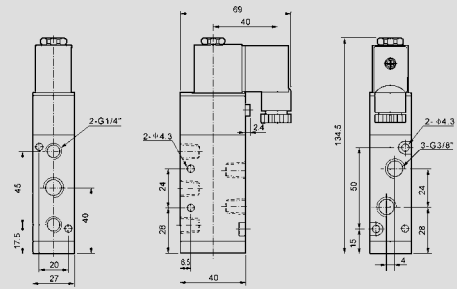
4V300 Series Solenoid Valve, Pneumatic Control Valve

外形尺寸 | Overall Dimension

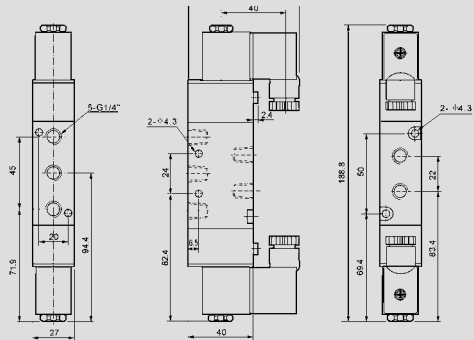
4V310-08



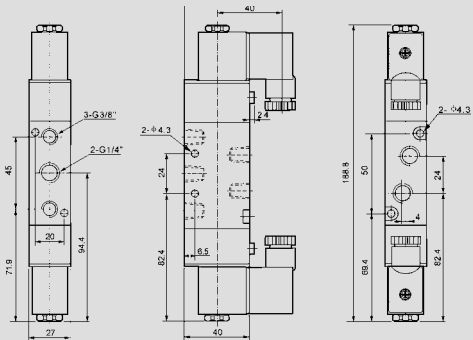
4V310-10



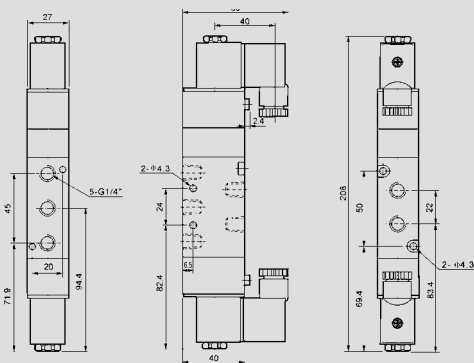
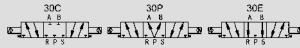
4V320-08



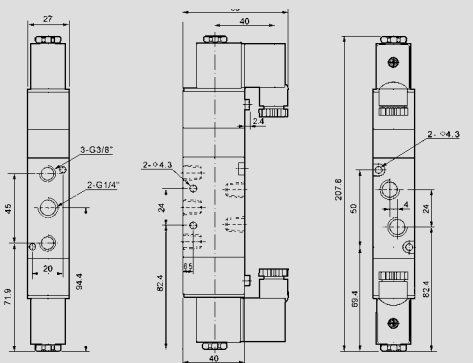
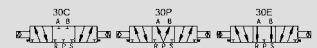
4V320-10



4V330-08



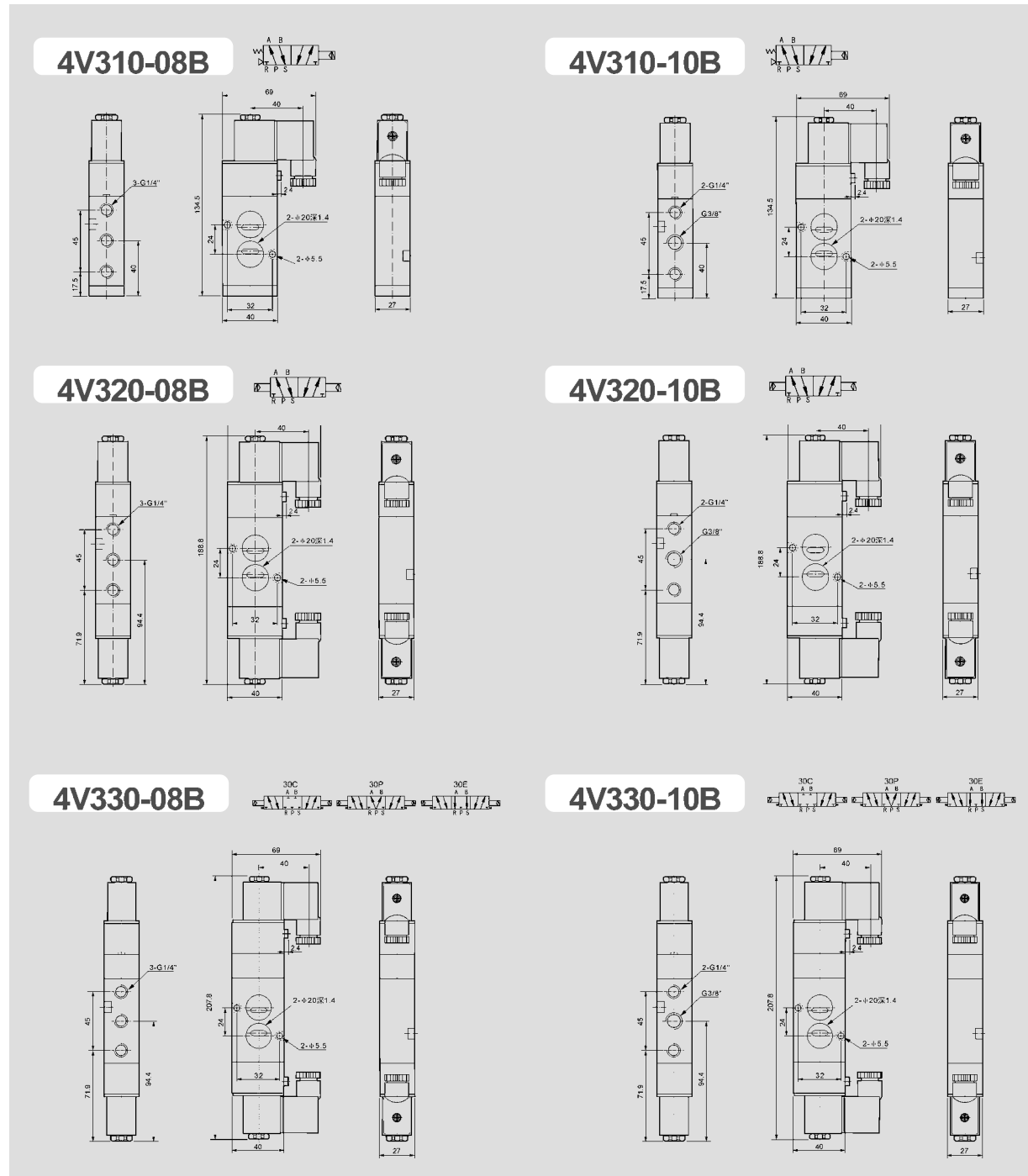
4V330-10



4V300 系列电磁阀、气控阀

4V300 Series Solenoid Valve, Pneumatic Control Valve

外形尺寸 | Overall Dimension



4V300 系列电磁阀、气控阀

4V300 Series Solenoid Valve, Pneumatic Control Valve

外形尺寸 | Overall Dimension

