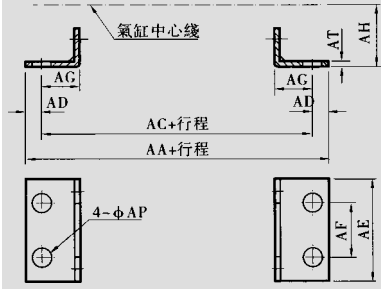


ISO6431 标准气缸安装附件

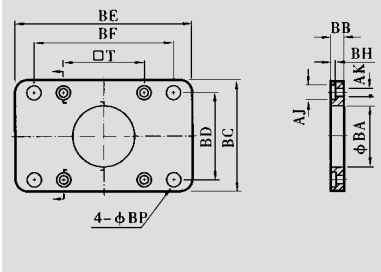
ISO 6431 Standard Cylinder Install Accessory

LB 型 Type



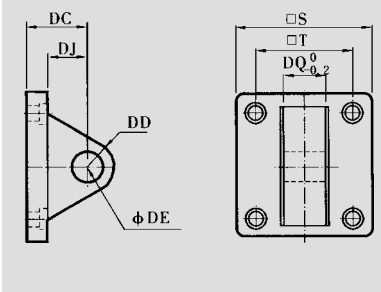
符号 / 缸径 Symbol / Bore	32	40	50	63	80	100	125	160	200
AA	158	179	190	209	248	258	290	340	380
AC	142	161	170	185	210	220	250	300	320
AD	8	9	10	12	19	19	20	20	30
AE	48	53	63	73	98	115	140	180	220
AF	32	36	45	50	63	75	90	115	135
AG	24	28	32	32	41	41	45	60	70
AH	32	36	45	50	63	71	90	115	135
AP	7	9	9	9	12	14	16	18	22
AT	4	4	4	4	5	5	8	8	9

FA 型 Type



符号 / 缸径 Symbol / Bore	32	40	50	63	80	100	125	160	200
AJ	10.5	10.5	14	14	17	17	19	25	25
AK	7	7	9	9	11	11	13	17	17
BA	30.3	35.3	40.3	45.3	45.3	55.3	60.3	65.3	75.3
BB	10	10	12	12	16	16	20	20	25
BC	50	55	65	75	100	120	140	180	220
BD	32	36	45	50	63	75	90	115	135
BE	80	90	110	125	154	186	224	280	320
BF	64	72	90	100	126	150	180	230	270
BH	6.5	6.5	6.5	8.5	10.5	10.5	8	8	12
BP	7	9	9	9	12	14	16	18	22
T	32.5	38	46.5	56.5	72	89	110	140	175

CA 型 Type

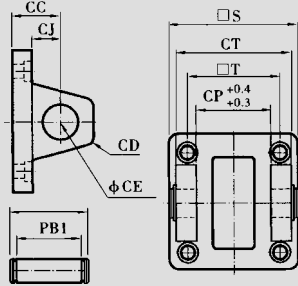


符号 / 缸径 Symbol / Bore	32	40	50	63	80	100	125	160	200
S	47	53	65	75	95	115	140	180	220
T	32.5	38	46.5	56.5	72	89	110	140	175
DC	22	25	27	32	36	41	50	55	60
DD	9	12	12	15	15	20	25	30	30
DE	10	12	12	16	16	20	25	30	30
DJ	13	16	17	22	22	27	33	35.5	37
DQ	25.8	27.8	31.7	39.7	49.7	59.7	69.7	89.7	89.7

ISO6431 标准气缸安装附件

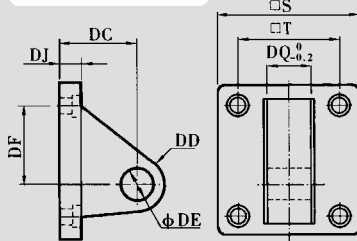
ISO 6431 Standard Cylinder Install Accessory

CB 型 Type



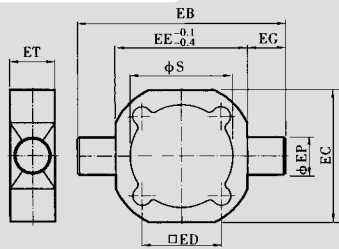
符号 / 缸径 Symbol / Bore	32	40	50	63	80	100	125	160	200
CC	22	25	27	32	36	41	50	55	60
CD	5	5	3	3	8	8	8	9	9
CE	10	12	12	16	16	20	25	30	30
CJ	13	16	17	22	22	27	31	35.5	36
CP	26	28	32	40	50	60	70	90	90
CT	45	52	60	70	90	110	130	170	170
PAI	52	60	68	79	99	119	139	181	181
PBI	46.5	53.5	61.5	71.5	91.5	111.5	131.5	171.5	171.5
S	47	53	65	75	95	115	140	180	220
T	32.5	38	46.5	56.5	72	89	110	140	175

CR 型 Type



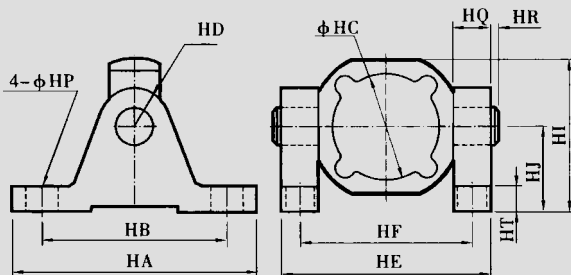
符号 / 缸径 Symbol / Bore	32	40	50	63	80	100	125	160	200
S	47	53	65	75	95	115	140	180	220
T	32.5	38	46.5	56.5	72	89	110	140	175
DC	32	36	45	50	63	70	90	115	135
DD	10	11	13	15	15	19	22	31	31
DE	10	12	12	06	06	20	25	30	30
DF	21	24	33	37	47	55	70	97	105
DJ	8	10	12	12	14	15	20	25	30
DQ	25.8	27.8	31.7	39.7	49.7	59.7	69.7	89.7	89.7

TC 型 Type



符号 / 缸径 Symbol / Bore	32	40	50	63	80	100	125	160	200
EB	100	113	125	140	160	182	210	264	314
EC	50	58	70	80	100	126	154	196	240
ED	32.5	38	46.5	56.5	72	89	110	140	175
EE	50	63	75	90	110	132	160	200	250
EG	25	25	25	25	25	25	25	32	32
EP	12	16	16	20	20	25	25	32	32
ET	20	24	28	28	28	28	36	40	40
S	36	45	55	68	86	106	132	170	40

TC-M 型 Type



符号 / 缸径 Symbol / Bore	32	40	50	63	80	100
HA	110	110	110	120	120	120
HB	80	80	80	80	80	80
HC	36	45	55	58	86	106
HD	22	22	22	22	22	22
HE	96	109	121	136	156	178
HF	73	86	98	113	133	155
HI	68.5	76.5	82	86	113	130
HJ	43.5	47.5	47	46	63	67
HQ	23	23	23	23	23	23
HR	2	2	2	2	2	2
HT	12	12	12	12	14	14
HP	12	12	12	12	14	14