

SDA 薄型气缸

SDA Thin Type Cylinder



订购码 | Ordering Code

SDA	-	20	X	30	-	S	-	LB
型号 Type SDA: 复动型 SSA: 单动伸出型 STA: 单动引入型 SDAD: 双轴型 SDA: Double Action SSA: Single Action Extrusion type STA: Single Action Drawing-in Type SDAD: Double-shaft Type		缸径 Cylinder Bore		行程 Stroke		磁石代号 S: 附磁石 空白: 不附磁石 Magnet Code S: attach magnet Blank: not attach magnet		牙型 空白: 内螺纹 B: 外螺纹 N: 无螺纹 Cog Type Blank: Internal Thread B: External Thread N: No Thread

规格 | Specification

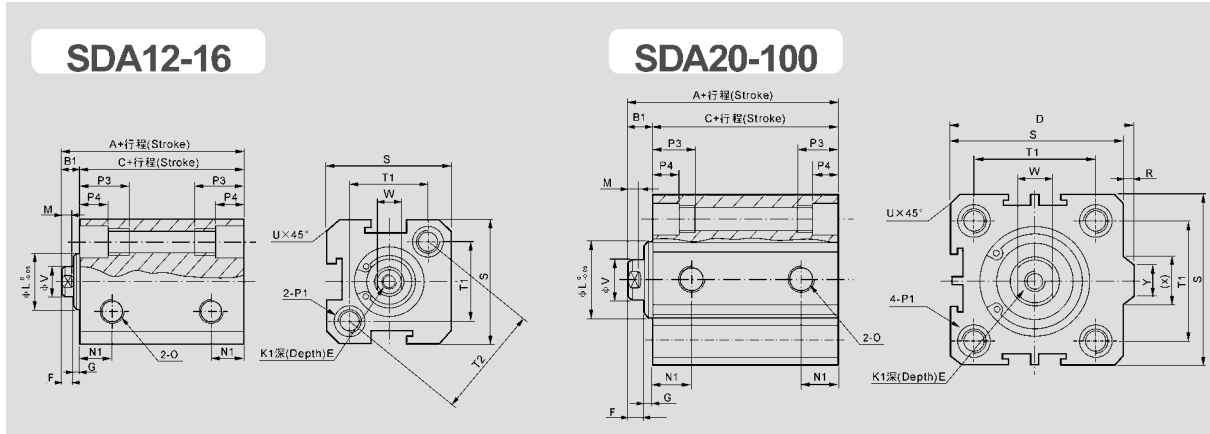
内径 Bore (mm)	12	16	20	25	32	40	50	63	80	100
动作形式 Motion Pattern	复动型 Double Action									
工作介质 Working Medium	空气 Air									
使用压力范围 Operating Pressure Range	1.0~9.0 Kgf/cm ²									
保证耐压力 Ensured Pressure Resistance	10.5 Kgf/cm ²									
使用温度范围 Operating Temperature Range	0~70℃									
使用速度范围 Operating Speed Range	30~500 mm/s									
接管口径 Joint Pipe Bore	M5 × 0.8									

行程 | Stroke

内径 Bore (mm)	12	16	20	25	32	40	50	63	80	100
复动型 Double Action	不附磁 Not attach magnet	5~60 mm 每5mm一级 Every 5mm is grouped as one grade	5~85 mm 每5mm一级 Every 5mm is grouped as one grade	5~90 mm 每5mm一级 Every 5mm is grouped as one grade	100~110 mm 每5mm一级 Every 5mm is grouped as one grade	5~90 mm 每5mm一级 Every 5mm is grouped as one grade	5~90 mm 每5mm一级 Every 5mm is grouped as one grade	5~90 mm 每5mm一级 Every 5mm is grouped as one grade	100~130 mm 每5mm一级 Every 5mm is grouped as one grade	100~130 mm 每5mm一级 Every 5mm is grouped as one grade
单动型 Single Action	附磁型 Attach magnet	5~50 mm 每5mm一级 Every 5mm is grouped as one grade	5~75 mm 每5mm一级 Every 5mm is grouped as one grade	5~90 mm 每5mm一级 Every 5mm is grouped as one grade	100mm	5~90 mm 每5mm一级 Every 5mm is grouped as one grade	5~90 mm 每5mm一级 Every 5mm is grouped as one grade	5~90 mm 每5mm一级 Every 5mm is grouped as one grade	100~120 mm 每5mm一级 Every 5mm is grouped as one grade	100~120 mm 每5mm一级 Every 5mm is grouped as one grade
最大行程 Max. Stroke	60mm	100mm	120mm	120mm	120mm	130mm	130mm	130mm	130mm	130mm

SDA 薄型气缸
SDA Thin Type Cylinder

外形尺寸 | Overall Dimension



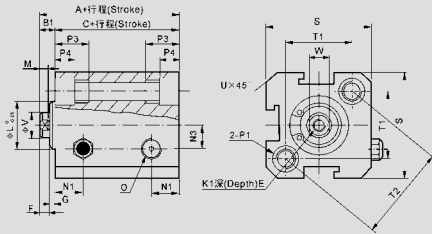
尺寸表 | Dimension sheet

型式 Type	标准型 Standard type			附磁型 Attach magnet			B	E	F	G	K1	L	M	N1	N3	O	
	A	B1	C	A	B1	C											
12	22	5	17	32	5	27	-	6	4	1	M3 × 0.5	10.2	2.8	6.3	6	M5 × 0.8	
16	24	5.5	18.5	34	5.5	28.5	-	6	4	1.5	M3 × 0.5	11	2.8	7.3	6.5	M5 × 0.8	
20	25	5.5	19.5	35	5.5	29.5	36	8	4	1.5	M4 × 0.7	16	2.8	7.5	-	M5 × 0.8	
25	27	6	21	37	6	34	42	10	4	2	M5 × 0.8	17	2.8	8	-	M5 × 0.8	
32	31.5	7	24.5	41.5	7	34.5	50	12	4	3	M6 × 1	22	2.8	9	-	G1/8	
40	33	7	26	43	7	36	58.5	12	4	3	M8 × 1.25	28	2.8	10	-	G1/8	
50	37	9	28	47	9	38	71.5	15	5	4	M10 × 1.5	38	2.8	10.5	-	G1/4	
63	41	9	32	51	9	42	84.5	15	5	4	M10 × 1.5	40	2.8	11.8	-	G1/4	
80	52	11	41	62	11	51	104	15	6	5	M14 × 1.5	45	4	14.5	-	G3/8	
100	63	12	51	73	12	61	124	18	7	5	M18 × 1.5	55	4	20.5	-	G3/8	
内径/符号 Bore / Symbol	P1						P3	P4	R	S	T1	T2	U	V	W	X	Y
12	双边 Double Side	φ6.5	牙 Coq	M5 × 0.8	通孔 Through Hole	φ4.2	12	4.5	-	25	16.2	23	1.6	6	5	-	-
16	双边 Double Side	φ6.5	牙 Coq	M5 × 0.8	通孔 Through Hole	φ4.2	12	4.5	-	29	19.8	28	1.6	6	5	-	-
20	双边 Double Side	φ6.5	牙 Coq	M5 × 0.8	通孔 Through Hole	φ4.2	14	4.5	2	34	24	-	2.1	8	6	11.3	10
25	双边 Double Side	φ8.2	牙 Coq	M6 × 1.0	通孔 Through Hole	φ4.6	15	5.5	2	40	28	-	3.1	10	8	12	10
32	双边 Double Side	φ8.2	牙 Coq	M6 × 1.0	通孔 Through Hole	φ4.6	16	5.5	6	44	34	-	2.15	12	10	18.3	15
40	双边 Double Side	φ10	牙 Coq	M8 × 1.25	通孔 Through Hole	φ6.5	20	7.5	6.5	52	40	-	2.25	16	14	21.3	16
50	双边 Double Side	φ11	牙 Coq	M8 × 1.25	通孔 Through Hole	φ6.5	25	8.5	9.5	62	48	-	4.15	20	17	30	20
63	双边 Double Side	φ11	牙 Coq	M8 × 1.25	通孔 Through Hole	φ6.5	25	8.5	9.5	75	60	-	3.15	20	17	28.7	20
80	双边 Double Side	φ14	牙 Coq	M12 × 1.75	通孔 Through Hole	φ9.2	25	10.5	10	94	74	-	3.65	25	22	36	26
100	双边 Double Side	φ17.5	牙 Coq	M12 × 1.75	通孔 Through Hole	φ11.3	30	13	10	114	90	-	3.65	32	27	35	26

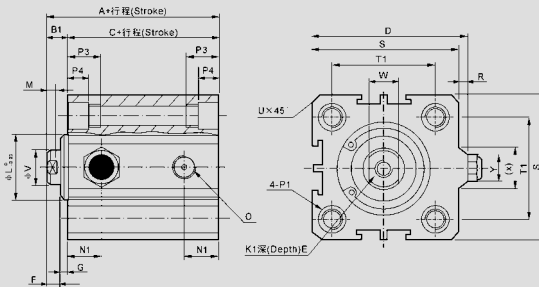
SDA 薄型气缸
SDA Thin Type Cylinder

外形尺寸 | Overall Dimension

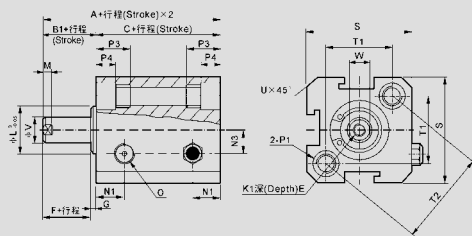
SSA12-16



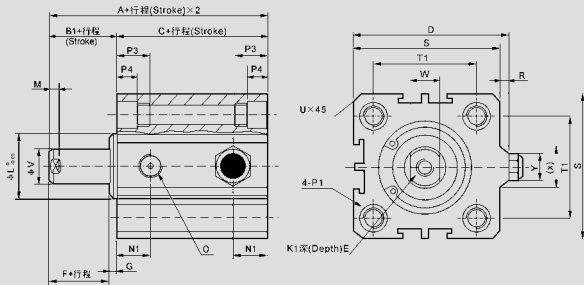
SSA20-40



STA12-16



STA20-40



尺寸表 | Dimension Sheet

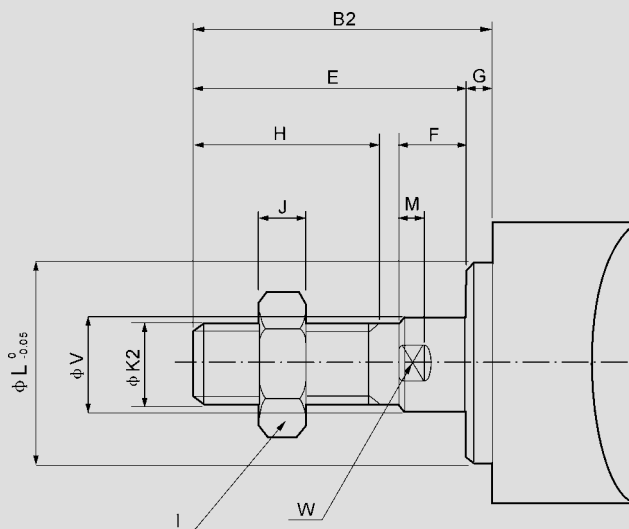
型式 Type	标准型 Standard type			附磁型 Attach magnet					D	E	F	G	K1	L	M	N1	N3				
	A		B1	C		A		B1										C			
内径 Bore / 符号 Symbol 行程 Stroke	≤10	>10	B1	≤10	>10	≤10	>10	B1	≤10	>10	P3	P4	R	S	T1	T2	U	V	W	X	Y
12	32	42	5	27	37	42	52	5	37	47	-	6	4	1	M3 × 0.5	10.2	2.8	6.3	6		
16	34	44	5.5	28.5	38.5	44	54	5.5	38.5	48.5	-	6	4	1.5	M3 × 0.5	11	2.8	7.3	6.5		
20	35	45	5.5	29.5	39.5	45	55	5.5	39.5	49.5	36	8	4	1.5	M4 × 0.7	16	2.8	7.5	-		
25	37	47	6	34	41	47	57	6	41	51	42	10	4	2	M5 × 0.8	17	2.8	8	-		
32	41.5	51.5	7	34.5	44.5	51.5	61.5	7	44.5	54.5	50	12	4	3	M6 × 1	22	2.8	9	-		
40	43	53	7	36	46	53	63	7	46	56	58.5	12	4	3	M8 × 1.25	28	2.8	10	-		
内径 / 符号 Bore / Symbol	O		P1					P3	P4	R	S	T1	T2	U	V	W	X	Y			
12	M5 × 0.8		双边 Double Side	φ6.5	牙 Coq	M5 × 0.8	通孔 Through Hole	φ4.2	12	4.5	-	25	16.2	23	1.6	6	5	-	-		
16	M5 × 0.8		双边 Double Side	φ6.5	牙 Coq	M5 × 0.8	通孔 Through Hole	φ4.2	12	4.5	-	29	19.8	28	1.6	6	5	-	-		
20	M5 × 0.8		双边 Double Side	φ6.5	牙 Coq	M5 × 0.8	通孔 Through Hole	φ4.2	14	4.5	2	34	24	-	2.1	8	6	11.3	10		
25	M5 × 0.8		双边 Double Side	φ8.2	牙 Coq	M6 × 1.0	通孔 Through Hole	φ4.6	15	5.5	2	40	28	-	3.1	10	8	12	10		
32	G1/8		双边 Double Side	φ8.2	牙 Coq	M6 × 1.0	通孔 Through Hole	φ4.6	16	5.5	6	44	34	-	2.15	12	10	18.3	15		
40	G1/8		双边 Double Side	φ10	牙 Coq	M8 × 1.25	通孔 Through Hole	φ6.5	20	7.5	6.5	52	40	-	2.25	16	14	21.3	16		

SDA 薄型气缸

SDA Thin Type Cylinder

外牙尺寸 | Cog Dimension

SDA,SSA,STA



尺寸表 | Dimension Sheet

内径/符号 Bore / Symbol	B2	E	F	G	H	I	J	K2	L	M	V	W
12	17	16	4	1	10	8	4	M5 × 0.8	10.2	2.8	6	5
16	17.5	16	4	1.5	10	8	4	M5 × 0.8	11	2.8	6	5
20	20.5	19	4	1.5	13	10	5	M6 × 1.0	16	2.8	8	6
25	23	21	4	2	15	12	6	M10 × 1.25	17	2.8	10	8
32	25	22	4	3	15	17	6	M14 × 1.5	22	2.8	12	10
40	35	32	4	3	25	19	8	M18 × 1.5	28	2.8	16	14
50	37	33	5	4	25	27	11	M18 × 1.5	38	2.8	20	17
63	37	33	5	4	25	27	11	M22 × 1.5	40	2.8	20	17
80	44	39	6	5	30	32	13	M22 × 1.5	45	4	25	22
100	50	45	7	5	35	36	13	M26 × 1.5	55	4	32	27