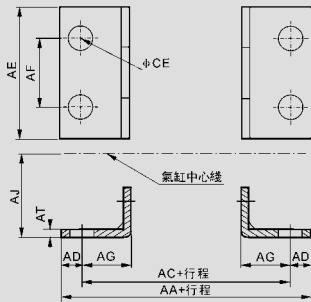


## SC 系列标准气缸附件

SC Series Standard Cylinder Accessory

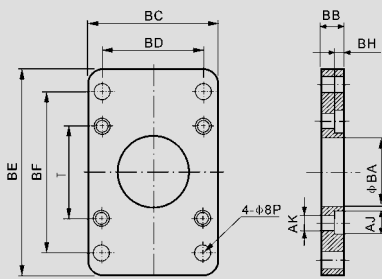
### 外形尺寸 | Overall Dimension 尺寸表 | Dimension Sheet

#### LB 脚架 Foot Rest



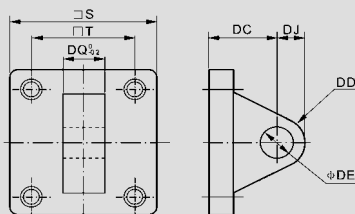
符号 / 缸径 Symbol / Bore	32	40	50	63	80	100	125	160	200
AA	153	169	173	184	200	210	249	328	380
AC	134	140	149	158	168	174	213	288	320
AD	9.5	14.5	12	12	16	18	18	20	30
AE	50	57	68	80	97	112	140	180	220
AF	33	36	47	56	70	84	90	115	135
AG	20.5	23.5	28	31	30	30	45	60	70
AJ	28	30	36.5	41	49	57	90	115	135
AP	9	12	12	12	14	14	16	18	22
AT	3.2	3.2	3.2	3.2	4	4	8	8	10

#### FA、FB 法兰 Flange



符号 / 缸径 Symbol / Bore	32	40	50	63	80	100	125	160	200
BA	28.3	32.3	38.3	38.3	47.3	47.3	56	63	81
BB	10	10	10	12	16	16	20	25	25
BC	47	52	65	76	95	115	140	180	220
BD	33	36	47	56	70	84	90	115	135
BE	72	84	104	116	143	162	224	280	320
BF	58	70	86	98	119	138	180	230	270
BH	6.5	6.5	6.5	8.5	10.5	10.5	15	20	20
AJ	10.5	10.5	13.5	13.5	16.6	16.6	19	25	25
AK	6.5	6.5	8.5	8.5	10.5	10.5	12.5	16.5	16.5
BP	7	7	9	9	12	12	16	18	22
T	33	37	47	56	70	84	110	140	175

#### CA 单耳环 Single Earring



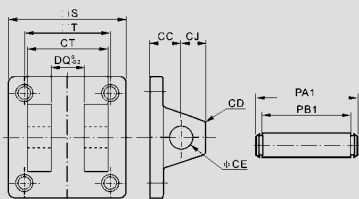
符号 / 缸径 Symbol / Bore	32	40	50	63	80	100	125	160	200
S	48	50	62	75	94	112	140	180	220
T	33	37	47	56	70	84	110	140	175
DC	34	34	34	34	48	48	50	55	60
DD	14	14	15	15	20	20	25	30	30
DE	12	14	14	14	20	20	25	30	30
DJ	14	14	15	15	20	20	25	30	30
DQ	16	20	20	20	32	32	70	90	90

## SC 系列标准气缸附件

SC Series Standard Cylinder Accessory

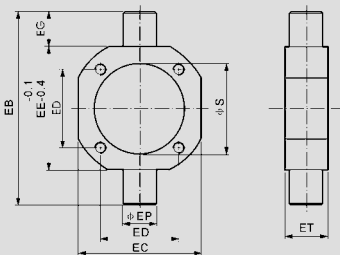
### 外形尺寸 | Overall Dimension 尺寸表 | Dimension Sheet

#### CB 双耳环 Double Earring



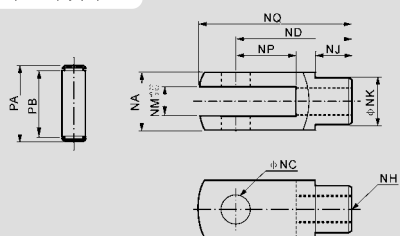
符号 / 缸径 Symbol / Bore	32	40	50	63	80	100	125	160	200
CC	19	19	19	19	32	32	50	55	60
CD	5	5	3	3	8	8	25	30	30
CE	12	14	14	14	20	20	25	30	30
CJ	13	13	15	15	21	21	25	30	30
CP	16.3	20.5	20.3	20.3	32.3	32.3	70	90	90
CT	32	44	52	52	64	64	120	160	160
PAI	41	51.8	60.3	60.3	73.8	73.8	130	170	170
PBI	33.5	45.8	54	54	65.5	65.5	121.5	161.5	161.5
S	48	50	62	75	94	112	140	180	220
T	33	37	47	56	70	84	110	140	175

#### TC 中摆 Dimension

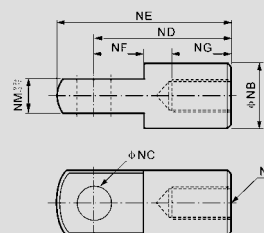


符号 / 缸径 Symbol / Bore	40	50	63	80	100	125	160	200
EB	113	126	138	164	182	210	264	336
EC	63	76	88	114	132	160	200	240
ED	37	47	56	70	84	110	140	175
EE	63	76	88	114	132	160	200	240
EG	25	25	25	25	25	25	32	48
EP	25	25	25	25	25	25	32	38
ET	30	30	30	30	30	30	38	44
S	45.5	55.5	68.5	87.5	107.5	134.5	172.5	212.5

#### Y 接头 Connection



#### I 接头 Connection



符号 / 缸径 Symbol / Bore	NA	NB	NC	ND	NE	NF	NG	NH	NJ	NK	NM	NP	NQ	PA	PB
32	19	20	10	40	52	15	20	M10 × 1.25	12	18	10	20	52	26.2	20
40	25.4	24	12	48	67	24	20	M12 × 1.25	20	23	12	24	62	32.8	26.5
50	32	32	16	64	89	32	23	M16 × 1.5	22	30	16	32	83	39.3	33
63	32	32	16	64	89	32	23	M16 × 1.5	22	30	16	32	83	39.3	33
80	44.4	40	20	80	112	40	30	M20 × 1.5	30	39	20	40	105	53.3	45
100	44.4	40	20	80	112	40	30	M20 × 1.5	30	39	20	40	105	53.3	45